

For a traditional, personal and professional service

64 Felpham Road, Felpham, Bognor Regis, West Sussex PO22 7NZ



12 Derwent Grove
Felpham, Bognor Regis,
PO22 8NE

£425,000 Freehold

www.maysagents.co.uk



These particulars are believed to be correct but their accuracy is not guaranteed. They do not form part of any contract.
Mays The Village Agent Ltd. Company Number 7930877. Registered in Cardiff. Registered Office: 93 Aldwick Road, Bognor Regis PO21 2NW

Tucked into the corner of this residential cul-de-sac is this **DETACHED FAMILY HOME** much improved and extended over the years by the present owner to provide versatile accommodation of spacious proportions. If length of occupation is a sign of the quality of lifestyle offered by this property then the **40 years plus of ownership** by this family must surely confirm this. A recently installed **contemporary styled bathroom, a 20 ft Kitchen Dining Room, a double glazed south facing Garden Room plus a Utility Room** extension contribute to the overall attractions of the property, whilst **gas fired central heating and uPVC framed double glazing** are also installed. If this sounds like the sort of property that might suit your purposes then contact **May's** for an appointment to view, perhaps you could be the owner for the next 40 years!!

ACCOMMODATION

COVERED PORCH:

With uPVC framed double glazed leaded light door to:

ENTRANCE HALL:

Radiator; cloaks storage cupboard.

CLOAKROOM:

Low level W.C.: corner wash basin; radiator.

SITTING ROOM: 13' 6" x 11' 8" (4.11m x 3.55m)

With feature fireplace having gas point; radiator; full width bow window with seating/display area; wall light points.

KITCHEN/DINING ROOM: 18' 2" x 11' 2" (5.53m x 3.40m)
(maximum measurements over units). Extensive range of floor standing drawer and cupboard units having roll edged worktop, tiled splash backs and wall mounted cabinets over; inset stainless steel sink unit; space and plumbing for dishwasher; space for range cooler, plus American style fridge/freezer; arch way opening to:

UTILITY ROOM: 5' 2" x 5' 2" (1.57m x 1.57m)

With fitted storage cupboards; space and plumbing for washing machine; porthole window; glazed folding doors to:

GARDEN ROOM: 18' 4" x 9' 3" (5.58m x 2.82m)

Of uPVC framed double glazed construction on brick plinth with solid pitched roof having 'velux' roof lights; 2 radiators; power and light; uPVC framed double glazed double doors to Garden; further sliding doors to Kitchen/Dining Room.

LANDING:

With trap hatch and ladder to insulated and boarded roof space with gas fired boiler.

BEDROOM 1: 12' 9" x 10' 9" (3.88m x 3.27m)

(maximum measurements). With triple built in wardrobe cupboards, plus further range of fitted wardrobes and drawers; radiator.

BEDROOM 2: 10' 8" x 10' 6" (3.25m x 3.20m)

Radiator.

BEDROOM 3: 9' 9" x 7' 3" (2.97m x 2.21m)

'L' shaped with the former reducing to 6'2. Built in wardrobe store; radiator.

BATH/SHOWER ROOM:

Recently re-fitted in a contemporary style with free-standing bath having mixer tap and hand held shower attachment; close coupled W.C. with concealed cistern; wash basin inset in vanity nit; fully tiled shower cubicle with independent mixer and glazed sliding door; in walls fully tiled; extractor fan.

OUTSIDE AND GENERAL:

HOBBIES ROOM: 13' 4" x 7' 6" (4.06m x 2.28m)

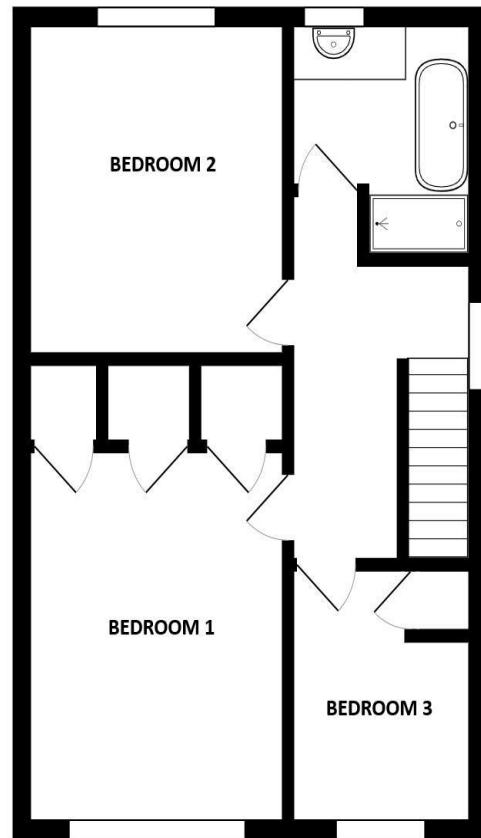
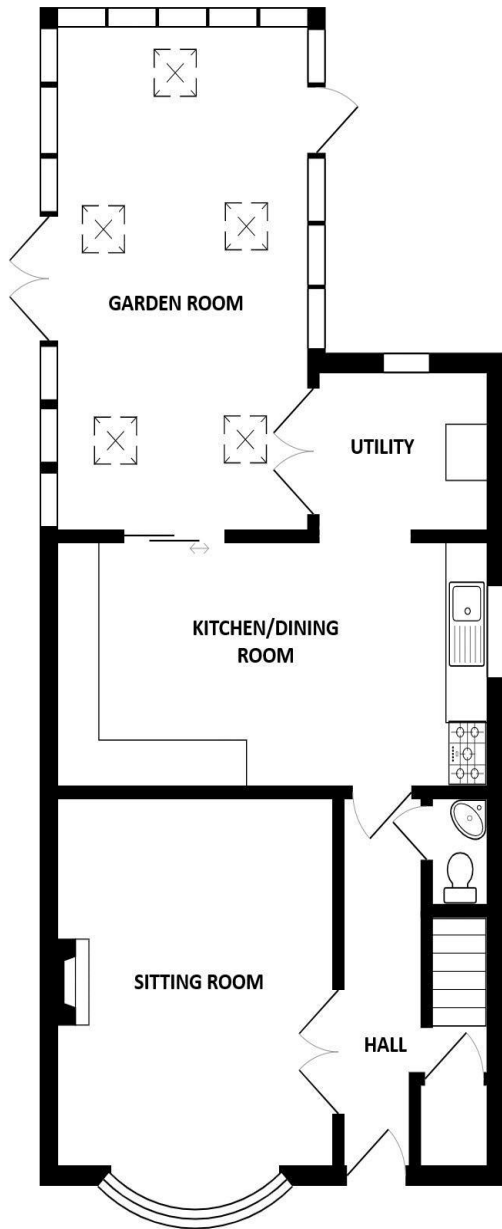
OF timber framed construction and recently utilised as a CRAFTING ROOM with power and light.

GARDENS:

The gardens have been designed for ease of maintenance being mainly paved with small inset lawned area and surrounded by raised, sleeper edged borders. ALUMINIUM FRAMED GREENHOUSE; 2 GARDEN SHEDS both with power and light. The FRONT GARDEN is laid mainly to block paving providing parking for a number of vehicles and providing access to:

POTENTIAL GARAGE SPACE:

Located to the side of the property and accessed via twin side hung wooden gates to paved hardstanding (all subject to necessary consents)





Score	Energy rating	Current	Potential
92+	A		
81-91	B		
69-80	C	75 C	80 C
55-68	D		
39-54	E		
21-38	F		
1-20	G		

More photographs may be available on our website
www.maysagents.co.uk

The mention of any appliance and/or services in these sales particulars does not imply that they are in full and efficient working order or that they have been tested.